



# ANNUAL REPORT 2023 - 24

---

## MATS UNIVERSITY

**MATS University Campus, Aarang:** Arang Kharora  
Highway, Gullu, Aarang, Raipur, C. G. 493441

**MATS University Campus, Raipur:** MATS Tower,  
Pandri, Raipur, C.G. 492004

---

# MATS UNIVERSITY



## ANNUAL REPORT OF 2023 - 24

**MATS University Campus, Aarang:** Arang-Kharora Highway, Gullu, Aarang, Raipur, C. G. 493441

**MATS University Campus, Raipur:** MATS Tower, Pandri, Raipur, C.G. 492004

Tel: + 91 – 0771 – 4078995 / 96 / 98

Website: [www.matsuniversity.ac.in](http://www.matsuniversity.ac.in)

# Table of the Contents

Chapter 1	1-4
About MATS University.....	1
Mission.....	1
Vision & Values.....	2
Campus Locations.....	2
Education System.....	3
Approvals & Accreditations.....	4
Chapter 2	5-15
Message from the Chancellor.....	5
Special thanks to Partners and Stakeholders.....	7
Key Achievements and Vision for the future.....	9
Governance.....	12
Organogram of the MATS University.....	13
Authorities of the University.....	14
▪ Governing Body.....	14
▪ Board of Management.....	14
▪ Finance Committee.....	14
▪ Academic Council.....	15
List of Administrative Personnel.....	15
Chapter 3	16-31
Academic Programmes & Courses Offered.....	16
Admission Procedure.....	20
Examination and Evaluation.....	21
Facilities for Academic Activity.....	22
Hostels & Mess.....	26
Academic Schools/Departments.....	26
Infrastructure and Academic expansion plan.....	30

Chapter 4	32-46
Course-wise admissions AY 2023-24.....	32
School-wise admissions AY 2023-24.....	32
Notable Achievements of the Faculties.....	33
• Publications.....	33
• Participations.....	35
Notable Achievements of the Students.....	38
• NCC.....	38
• Other Activities.....	38
• Placement Statistics.....	38
• Placement Packages.....	39
Community Engagement and Social responsibilities.....	39
Important activities.....	41
Impact and Future plans.....	42
Testimonials of the students.....	43
LOCATION MAP.....	46

\*\*\*\*



# ANNUAL REPORT 2023 - 24

---

## CHAPTER - 1

- About MATS University
  - Mission
  - Vision & Values
  - Campus Locations
  - Education System
  - Approvals & Accreditations
-

# CHAPTER – 1

## ABOUT MATS UNIVERSITY

MATS University, run by Shri Bhagwan Mahavir Jain Education and Cultural Society, is one of the first Private Universities of Chhattisgarh State established by the Government of Chhattisgarh vide Gazette Notification dated November 3, 2006 Chhattisgarh Private Universities (Establishment & Operation) (Amendment) Act, 2006 (No. 29 of 2006), an Act to amend the Chhattisgarh Private Universities (Establishment & Operation) Act, 2005 (No. 13 of 2005).

It was established as a Center of exceptional learning in the form of a Unitary University to impart Higher Education in the State at par with world-class standards in terms of Teaching Learning Process and Infrastructure, the conditions it fulfills so appropriately. The University established by a Jain Society is recognized as a Jain Minority University. It is committed to quality and follows it with all vigor without compromising on any aspect of its functioning. In a very short duration of nine years, it has proved what it claims and vows to maintain the same in all the following years. UGC has recognized MATS University under section 2(f) of UGC Act, 1956 vide F. No. 9-14/2008 (CPP-I) dated September 3, 2009. MATS University is a member of Association of Indian Universities (AIU) since November 25, 2011.

Established in 2006, MATS University is Chhattisgarh's the oldest Private University and consistently ranked in the top few Universities in Central India. Our reputation for excellence and breaking new ground has been forged by a continuous stream of exceptional people. We proudly count among top entrepreneurs, business owners, and leading professionals as our distinguished alumni. Today, our vibrant culture continues to attract some of the best and brightest academic leaders as well as students from all over the country.

## MISSION

To foster an intellectual and ethical environment in which the spirit and skills within MATS will thrive so as to impart high-quality education, training, research, and consultancy services with a global outlook and human values. To create and develop technocrats, entrepreneurs, and business leaders who will strive to & improve the quality of human life. To create truly

world class schools of Management Sciences, Engineering Sciences, Information Technology, Life Science, Basic and Applied Sciences, Humanities & Social Sciences and Life Skills.

## VISION & VALUES

To become a world-class center in providing globally relevant education. MATS is a Global University, known for the quality academic programs and outstanding faculty, products, and services to students and clients independent of place and time constraint. MATS University will be a benchmark institution for lifelong partnerships with students, the workforce, and public and private enterprises. Building on its proud tradition, MATS University will extend educational opportunity to those who will make our state (Chhattisgarh), our nation and global society a better place to live and work.

MATS University emphasizes on its seven core values which justifies with the vision and mission of the University:

- The courage to dream
- The thirst for knowledge
- The passion to excel
- The conviction to break free
- The vision to build
- The skill to achieve
- The character to inspire

## CAMPUS LOCATIONS

MATS University has 02 Campuses, one in Aarang and the latter in Raipur.

**MATS University Campus, Aarang:** The campus in Aarang is renowned for its modern architecture and lively atmosphere. Spread over an area of 100 plus acres, surrounded by lush greenery, it is located 42 km away from the state's capital. This location offers best of both the worlds. It is well connected with Naya Raipur's Business Centre and Raipur's shopping district. Being distant from the city, it is free from day-to-day chaos and offers a serene and peaceful learning environment.

**MATS University Campus, Raipur:** The campus is centrally located and well connected with the railway station & bus stand as well as the airport. Due to its central location and easy accessibility, students enjoy the campus life as well as can work for part-time roles with our partner Business Houses and Corporates. The City Campus is close to Museums, Central Library, Science Centre and other learning destinations. The campus has its own Library, Media Centre, Seminar Hall, and Atrium which is at the disposal of students. Being in the city, the students can get involved in various social and creative activities that take place from time to time and gather new experiences in life.

## EDUCATION SYSTEM

All the academic and co-curricular activities of the Institute are designed to fulfill our commitment for the intellectual and overall development of the students. The learning experience that we promote in MATS embraces both the formal learning that takes place in lecture halls and laboratories and the formal and less structured learning that takes place outside the classrooms. The University provides an environment for independence of thought and encourages students to develop strong, critical, and analytical skills through teaching and learning and also through different societies and sports clubs.

Co-curricular activities for students are designed through the adoption of the appropriate teaching-learning process. University revise the syllabus continuously to keep pace with the needs of industry and society. The teaching staffs formulate the course contents of various subjects, and monitors the theory and laboratory classes and activities. Undergraduate courses, post-graduate courses, and Ph.D. courses are completed in three years, two years, and a minimum of three years, respectively.

The University also emphasizes expert lectures, debates, quizzes, vocational training, and industrial visits for students. Extra-curricular activities are planned through games & sports, cultural programs, and NSS activities. Cultural activities provide a platform for students to know about various cultures of the state/regions of the country, resulting in national integration. It may be mentioned here that admission rules for students are such that people from all corners of the country are inducted into MATS family, which provides opportunities for the intermixing of people on a national basis. Here, it may be mentioned that there is a



good proportion of girl students, female teachers, and female supporting staffs at the University. This inculcates a healthy reciprocal respect for either sex. Usually, six days in a week is devoted to curricular activities, including co-curricular and extra-curricular activities at the University.

The Institute has library with state of art e-library facility, workshop with faculties for catering the needs of students' studies and projects, and sponsored projects. Research and academic projects are the backbone of academic activities. Availability of computing facility and dedicated internet facilities provide added advantages to a true learner. The pollution-free and eye-catching scenario of the MATS University Campus at Aarang and Raipur provides healthy inputs amidst very busy, tough, and laborious academic and para-academic activities of each and every individual.

Therefore, MATS educational system attempts an overall development of its students, teachers, supporting staff, neighboring people, society, and the nation.

## APPROVALS & ACCREDITATIONS

1. The University is recognized by **University Grants Commission (UGC)** under 2(f) of UGC Act of 1956 and is empowered to confer degrees as per the nomenclature specified by UGC after the successful completion of a course.
2. MATS University is a member of **Association of Indian Universities (AIU)**.
3. The University has got **B++** grade in First Cycle from **National Assessment and Accreditation Council (NAAC)**. For the Second Cycle, the University has already submitted **Self Study Report (SSR)**.
4. The University has the following approvals from the competent bodies to run courses and grant degrees after completion of the minimum basic requirements as stipulated by the regulators from time to time.
  - **Chhattisgarh Private Universities Regulatory Commission (CGPURC)**
  - **All India Council for Technical Education (AICTE)**
  - **National Council for Teacher Education (NCTE)**
  - **Bar Council of India (BCI)**
  - **Pharmacy Council of India (PCI)**



# ANNUAL REPORT 2023 - 24

---

## CHAPTER – 2

- Message from the Chancellor
  - Special thanks to Partners and Stakeholders
  - Key achievements and Vision for the future
  - Governance
  - Organogram of the MATS University
  - Authorities of the University
    - Governing Body
    - Board of Management
    - Finance Committee
    - Academic Council
    - List of Administrative Personnel
-

## CHAPTER – 2

### MESSAGE FROM THE CHANCELLOR

Dear Students, Faculty, Alumni, and Esteemed Stakeholders,

It gives me immense pleasure to present the Annual Report of MATS University for the academic year 2023-24. This year has been a testament to our unwavering commitment to excellence in education, research, and holistic development. As we reflect on our journey, I am proud to acknowledge the remarkable achievements and milestones that have strengthened our position as a premier institution of higher learning.

At MATS University, we have always believed that education is not just about imparting knowledge, but about nurturing minds to think critically, innovate, and contribute meaningfully to society. Our focus this year has been on enhancing the quality of education by introducing new and multidisciplinary programs, fostering research and innovation, and expanding our global partnerships.

I am particularly proud of our students, who have excelled in academics, sports, and various extracurricular activities. Their achievements are a testament to the quality of education and the supportive environment we provide. Our faculty members have also made significant contributions through their research, publications, and participation in national and international forums.

This year, we have taken significant strides in expanding our infrastructure and facilities, ensuring that our students have access to world-class resources. Our investments in technology and e-learning platforms have also paid off, making education more accessible and interactive for our students.

As we look to the future, our vision remains clear: to continue our journey of growth and excellence, while staying true to our core values of inclusivity, innovation, and integrity. We are committed to fostering a culture of continuous improvement and ensuring that MATS University remains a place where students can discover their potential and achieve their dreams.

I extend my heartfelt thanks to our faculty, staff, students, alumni, and all our stakeholders for their dedication and support. Together, we will continue to shape the future of education and make a lasting impact on society.

Warm regards,

**Gajaraj Pagariya**

Chancellor, MATS University

## SPECIAL THANKS TO PARTNERS AND STAKEHOLDERS

As we reflect on the academic year 2023-24, we are deeply grateful to our partners and stakeholders whose unwavering support and collaboration have been instrumental in helping MATS University achieve its goals. Your commitment to our vision and mission has enabled us to make significant strides in the fields of education, research, and community development.

We extend our heartfelt thanks to our industry partners, who have provided invaluable insights, resources, and opportunities for our students and faculty. Your collaboration has enriched our academic programs, enhanced our research capabilities, and helped bridge the gap between academia and industry. Through internships, placements, guest lectures, and collaborative projects, you have played a pivotal role in shaping the careers of our students and driving innovation on our campus.

Our academic partners, both national and international, have been crucial in expanding our horizons and fostering a global perspective within our university community. Your collaborations have allowed us to introduce new programs, engage in groundbreaking research, and create exchange opportunities that have broadened the learning experience for our students and faculty alike. Together, we have built a platform for knowledge exchange that transcends borders and empowers our community to think globally.

We also express our sincere gratitude to government bodies, NGOs, and community organizations that have partnered with us in our various outreach and social responsibility initiatives. Your support has enabled us to make a positive impact on society, whether through educational programs, community development projects, or sustainability initiatives. Together, we are contributing to the betterment of society and inspiring our students to become responsible and compassionate citizens.

To our alumni, your continued engagement and support have been a source of inspiration and pride for MATS University. Your achievements serve as a beacon for current students, and your contributions—whether through mentorship, guest lectures, or philanthropic support—have helped us maintain our commitment to excellence.

Lastly, we thank our internal stakeholders—faculty, staff, and students—whose dedication and hard work are the foundation of our success. Your passion for education, research, and service

continues to drive MATS University forward, and we are proud to have such a talented and committed community.

As we look ahead to the future, we remain committed to strengthening these partnerships and exploring new avenues of collaboration. Together, we will continue to achieve great things and make a lasting impact on the world of education and beyond.

Thank you once again for your invaluable contributions.

Warm regards,

**Prof. (Dr.) K. P. Yadav**

Vice-Chancellor, MATS University

## KEY ACHIEVEMENTS AND VISION FOR THE FUTURE

### KEY ACHIEVEMENTS (2023-24)

The academic year 2023-24 has been a remarkable one for MATS University, marked by numerous accomplishments across various domains. Our commitment to excellence in education, research, and holistic development has been reflected in the achievements of our students, faculty, and the institution. Some of the key highlights of this year include:

#### 1. Academic Excellence:

- Over **1500 students** successfully graduated this year, with many achieving high percentages and distinctions in their respective fields of study. Their academic achievements are a testament to the quality of education and support provided by the university.
- More than **50 students were awarded their PhD degrees**, showcasing the strength of our research programs and the dedication of our scholars and faculty.

#### 2. Research and Innovation:

- **5 new patents were registered** this year, highlighting our commitment to innovation and the university's growing role in contributing to cutting-edge research and technology.
- Our faculty members have authored **over 20 books**, contributing significantly to academic literature and sharing their expertise with the wider academic community.

#### 3. Student Achievements in Sports and Extracurricular Activities:

- Our students excelled in sports and other extracurricular activities, earning **high accolades in state-level competitions**. These achievements underscore the importance of a well-rounded education that nurtures talents beyond academics.

#### 4. Accreditation and Quality Assurance:

- MATS University has **successfully submitted the Self Study Report (SSR) for NAAC accreditation**. We are hopeful of achieving an even better grading than our previous accreditation, reflecting our continuous efforts towards maintaining and improving the quality of education.

### 5. Implementation of National Education Policy (NEP) 2020:

- This year, we have laid a strong foundation for the **launch of the National Education Policy (NEP) - 2020** at MATS University. We are fully committed to aligning our programs and strategies with the principles of NEP, ensuring a holistic, multidisciplinary, and flexible approach to education.

### 6. Recognition and Awards:

- MATS University has been honored with several **awards from social organizations** for its contributions towards quality education. These accolades affirm our dedication to academic excellence and social responsibility.

## VISION FOR THE FUTURE

As we celebrate these achievements, we are also focused on the future. MATS University is committed to furthering its mission of providing world-class education and expanding its reach and impact. Our vision for the future includes:

### 1. Global Outreach:

- We are planning to **tap students from across the globe** to study at MATS University. By enhancing our international outreach, we aim to create a diverse and vibrant student community that fosters cross-cultural learning and global perspectives.

### 2. Furthering Academic Excellence:

- We will continue to strengthen our academic programs and research initiatives, ensuring that our students and faculty remain at the forefront of innovation and knowledge creation.

### 3. Continued Focus on Quality Assurance:

- Building on our recent accreditation efforts, we will maintain a strong focus on quality assurance, continuously improving our processes and infrastructure to provide the best possible learning environment.



**4. Integration of NEP 2020:**

- We are committed to fully integrating the principles of NEP - 2020 into our curriculum and pedagogy, making MATS University a model for multidisciplinary and holistic education in line with national standards.

**5. Sustainability and Community Engagement:**

- Our efforts towards environmental sustainability and community engagement will continue to be a priority, ensuring that MATS University contributes positively to society and the environment.

As we move forward, we are confident that MATS University will continue to thrive as a center of excellence, innovation, and inclusivity. We look forward to achieving even greater milestones in the coming years and making a lasting impact on the world of education.

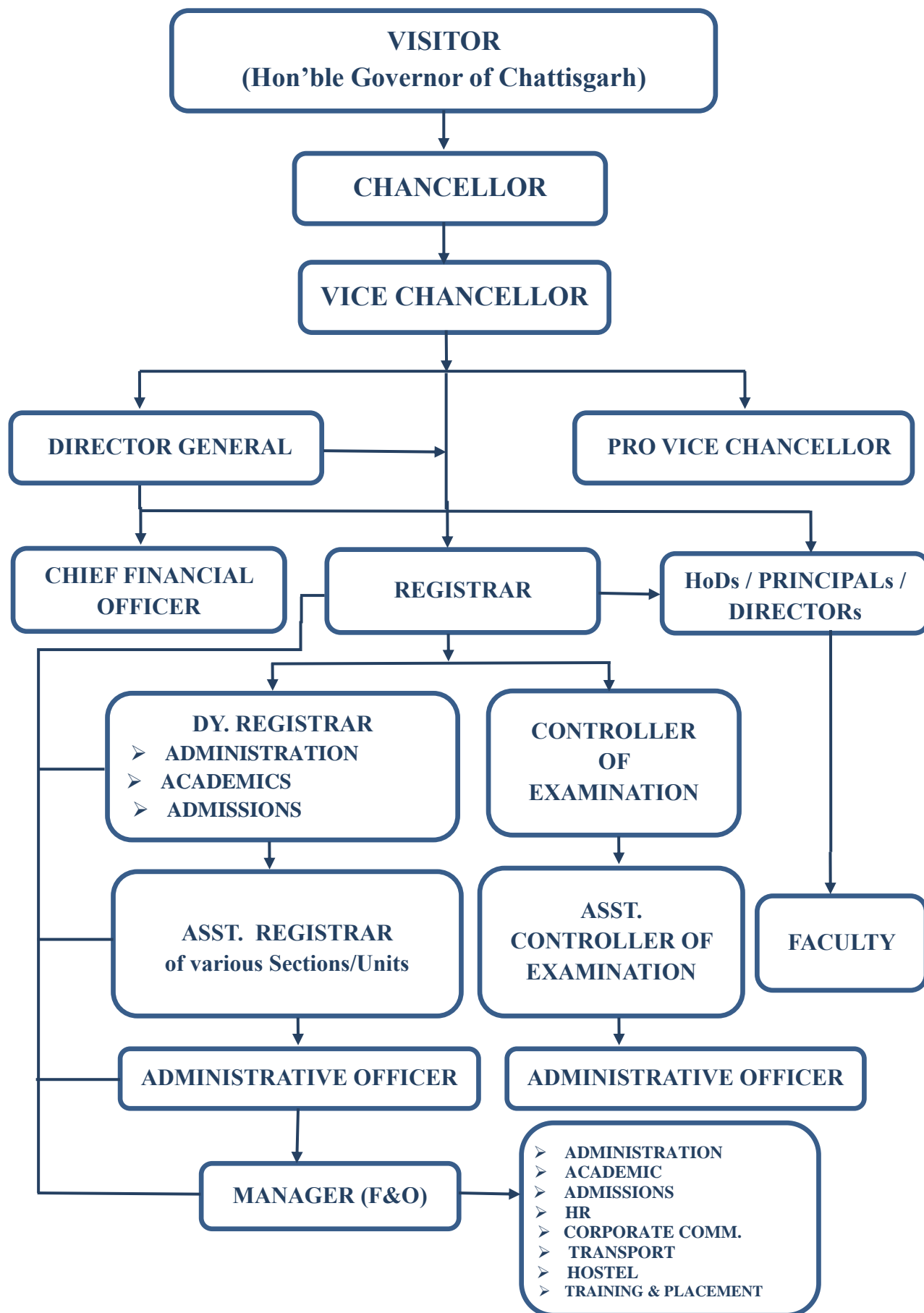
## GOVERNANCE

MATS University, Raipur is a Statutory University managed professionally and efficiently by different statutory committees that are constituted as per the Chhattisgarh Private Universities (Establishment & Operations Act) and Statutes & Ordinances of the University. Governing Body is the Highest Committee which is followed by Board of Management, Academic Council and various other Committees constituted as per the aforementioned rules and regulations. These Committees meet as per the requirements to form apposite strategies, plan to achieve near & distant goals and take appropriate decisions as per the need. These decisions help to achieve academic excellence.

As per the Statutes of the University, Visitor i.e. Honorable Governor of the State of Chhattisgarh is head of the University. Chairman of the Sponsoring Body is appointed as Chancellor of the University by the Sponsoring Body after obtaining prior approval from the Visitor. Vice-chancellor is the Academic and Administrative Head of the University. Director General is responsible for external tie-ups and collaborations. Registrar is the Chief Administrative Officer of the University who also heads the Examination Department. Chief Finance and Accounts Officer is responsible for all the financial matters and accounting. Controller of Examination discharges his duties under the subordination of Registrar and assisted by an Assistant Controller of Examination. Deputy Registrar performs the tasks as per the powers delegated to him by the competent authority.

The administrative work of the university is divided amongst various sections/units for ease of administration such as academic, admissions, hostels etc. which are headed by the respective Assistant Registrar. The Assistant Registrars are assisted by the respective Administrative Officers and Managers of the particular section/unit. Facilitation & Operations (F&O) division of the university is responsible for overall coordination and management amongst various sections/units viz; – Administration, Academic, Admissions, HR, Hostel and Training & Placement. The F&O division comprises of the Registrar, Deputy Registrar, Assistant Registrar, Administrative Officer and Manager with the Registrar as its head.

## ORGANOGRAM OF THE MATS UNIVERSITY



## AUTHORITIES OF THE UNIVERSITY

GOVERNING BODY			
S. No.	Name	Designation	Role
1.	Mr. Gajraj Pagariya	Chancellor	Chairperson
2.	Prof. (Dr.) K. P. Yadav	Vice Chancellor	Member
3.	Prof. (Dr.) P. C. Choubey	Visitor's Nominee	Member
4.	Prof. (Dr.) Deepak Sinha	Visitor's Nominee	Member
5.	Prof. (Dr.) Anil Kumar Khare	Visitor's Nominee	Member
6.	Prof. (Dr.) Deepika Dhand	Sponsoring Body Nominee	Member
7.	Mr. Priyesh Pagariya	Sponsoring Body Nominee	Member
8.	Mr. Sourabh Soni	Sponsoring Body Nominee	Member
9.	Mr. Gokulananda Panda	Registrar	Member Secretary

BOARD OF MANAGEMENT			
S. No.	Name	Designation	Role
1.	Prof. (Dr.) K. P. Yadav	Vice Chancellor	Chairperson
2.	Mr. Priyesh Pagariya	Sponsoring Body Nominee	Member
3.	Mr. Sourabh Soni	Sponsoring Body Nominee	Member
4.	Prof. (Dr.) Deepika Dhand	Pro Vice Chancellor	Member
5.	Prof. (Dr.) Radha Pandey	Govt. Body Nominee	Member
6.	Prof. (Dr.) Arun Ku. Mishra	Govt. Body Nominee	Member
7.	Prof. (Dr.) Parvinder Hanspal	Senior Most Professor	Member
8.	Prof. (Dr.) Umesh Gupta	Senior Most Professor	Member
9.	Prof. (Dr.) Vishwaprakash Roy	Senior Most Professor	Member
10.	Mr. Gokulananda Panda	Registrar	Member Secretary

FINANCE COMMITTEE			
S. No.	Name	Designation	Role
1.	Mr. Gajraj Pagariya	Chancellor	Chairman
2.	Prof. (Dr.) K. P. Yadav	Vice Chancellor	Member
3.	Mr. Gokulananda Panda	Registrar	Member
4.	Mr. Priyesh Pagariya	Chancellor's Nominee	Member
5.	CA Sourabh Soni	Chancellor's Nominee	Member
6.	CA Bankim Shukla	Sponsoring Body Nominee	Member
7.	Mr. Vikas Nirmal	Chief Finance & Accounts Officer	Member Secretary

ACADEMIC COUNCIL			
S. No.	Name	Designation	Role
1.	Prof. (Dr.) K. P. Yadav	Vice Chancellor	Chairperson
2.	Mr. Priyesh Pagariya	Director General	Member
3.	Prof. (Dr.) Vijay Bhushan	Dean, Academics	Member
4.	Prof. (Dr.) Asha Ambhaikar	Director, MSEIT	Member
5.	Prof. (Dr.) K. C. Dalai	Dean, MSL	Member
6.	Prof. (Dr.) Umesh Gupta	HoD, MSBS and MSMSR	Member
7.	Prof. (Dr.) Omprakash Chandrakar	HoD, MSIT	Member
8.	Prof. Parvinder Kaur	HoD, MSFDT	Member
9.	Prof. (Dr.) Ashish Saraf	HoD, MSS	Member
10.	Prof. (Dr.) Ranjana Das Sarkhel	HoD, MSAH - English	Member
11.	Prof. (Dr.) Reshma Ansari	HoD, MSAH - Hindi	Member
12.	Prof. (Dr.) Shaista Ansari	HoD, MSAH - Psychology	Member
13.	Dr. Deenanath Yadav	HoD, MSAH -Social Work	Member
14.	Dr. Kalpana Chandrakar	HoD, MSLS	Member
15.	Prof. (Dr.) Sanjeet Tiwari	HoD, MSED	Member
16.	Dr. Ayaz A. Khan	HoD, MSPED	Member
17.	Mr. Gokulananda Panda	Registrar	Member Secretary

LIST OF ADMINISTRATIVE PERSONNEL			
S. No.	Name	Designation	Department/Division
1.	Mr. Gokulananda Panda	Registrar	Registrar's Office
2.	Dr. Dharmendra P. Sharma	(HoD) Director	MIODL
3.	Mr. Syed Toufeeque	(HoD) Director	Corporate - Liaisoning
4.	Mr. Pradeep Saxena	Controller of Examination	Examination
5.	Dr. Ashish Jha	PA to Chancellor	Chancellor's Office
6.	Dr. Ramesh Kumar Sahu	Deputy Registrar	Registrar's Office
7.	Mr. Y. Krishna Rao	Assistant Registrar	HR (F&O)
8.	Ms. Urshita Baranwal	Assistant Registrar	Registrar's Office
9.	Mr. Srikant	Assistant Registrar	Training & Placement
10.	Mr. Swarit Choudhrie	Administrative Officer	F&O
11.	Mr. Ashish Kumar Dash	Administrative Officer	F&O
12.	Mr. Meghanadhu K.	Manager	Media Communications
13.	Mr. Md. Sahir Siddiqui	Manager	Transport
14.	Mrs. Rashida Amin	Manager	Admissions



# ANNUAL REPORT 2023 - 24

---

## CHAPTER – 3

### AN OVERVIEW

- Academic Programmes & Courses Offered
  - Admission Procedure
  - Examination and Evaluation
  - Facilities for Academic Activity
  - Hostels & Mess
  - Academic Schools/Departments
  - Infrastructure and Academic Expansion Plan
-

## CHAPTER – 3

### AN OVERVIEW

#### ACADEMIC PROGRAMMES AND COURSES OFFERED

The University runs Undergraduate, Post Graduate, and Doctoral programmes leading to the award of the degrees in the following subjects/specialization:

S. No.	School	Course/Programme	Specialization	Duration
1	MSMSR	Bachelor of Business Administration	Logistics	3 Years
			Marketing	
			Finance	
			HR	
2		Master of Business Administration	Marketing	2 Years
			Finance	
			HR	
3	MSIT	Diploma in Computer Applications	-	1 Year
4		Post Graduate Diploma in Computer Applications	-	1 Year
5		Bachelor of Science	Animation & Graphics	3 Years
6			Computer Science	
7		Bachelor of Computer Applications	-	3 Years
8		Master of Computer Applications	-	2 Years
9		Master of Science	Computer Science	2 Years
10	MSBS	Bachelor of Commerce	Logistics	3 Years
11		Master of Commerce	Finance	2 Years
12	MSFDT	Bachelor of Science	Fashion Design & Technology	3 Year
13			Interior Design & Decoration	
14		Master of Design	Interior Design & Decoration	2 Years
15	MSS	Bachelor of Science	Biotechnology	3 Years
16			Microbiology	
17			Mathematics	
18			Biology	
19		Bachelor of Forensic Science	Science	3 Years

20		Master of Science	Chemistry	2 Years
21			Microbiology	
22			Botany	
23			Zoology	
24			Mathematics	
25	MSAH-E	Bachelor of Arts	English - Mass Communication	3 Years
26		Master of Arts	English Literature	2 Years
27	MSAH-H	Diploma	Journalism and Mass Communication	1 Year
28		Bachelor of Arts	Hindi with Journalism and Tourism	3 Years
29		Bachelor of Arts	History-Political-Sociology	3 Years
30		Master of Arts	Hindi Literature and Journalism	2 Years
31	MSAH-P	Bachelor of Arts	Psychology	3 Years
32		Bachelor of Science	Psychology	2 Years
33		Master of Arts	Psychology	3 Years
34		Master of Science	Psychology	2 Years
35		Post Graduate Diploma	Guidance and Counselling	1 Year
36	MSAH-SW	Master of Social Work	-	2 Years
37	MSLS	Bachelor of Library & Information Science	-	3 Years
38		Master of Library & Information Science	-	2 Years
39	MSEIT	Diploma	Civil	3 Years
40			Mechanical	
41			Mining	
42		Bachelor of Technology	Aeronautical	4 Years
43			Civil	
44			Computer Science	
45			Mechanical	
46			Mining	
47		Master of Technology	Computer Science	2 Years
48			Computer Aided Structural Engineering	
49			Power Electronics	
50			Turbo Machinery	



51	MLS	Bachelor of Arts – Bachelor of Legislative Law	-	5 Years
52		Bachelor of Legislative Law	-	3 Years
53		Master of Legislative Law	-	1 Year
54	MSED	Bachelor of Education	-	3 Years
55		Master of Arts	Education	2 Years
56	MSPED	Bachelor of Physical Education		3 Years
57		Master of Arts	Yoga	2 Years
58		Post Graduate Diploma	Yoga	1 Year
59	MSP	Bachelor of Pharmacy	Pharmacy	4 Years
60		Diploma	Pharmacy	2 Years

MATS University offers a total of **60 courses** comprising **06 Diploma, 03 PG Diploma, 28 Under Graduate, and 23 Post Graduate** programs on campus in almost all the basic and applied disciplines under the Faculty of Management Sciences, Engineering Sciences, Education, Physical Education, Information Technology, Basic and Applied Sciences, Arts and Humanities, Life Science, Fashion Designing and Interior Designing, Library Science, and Law. In addition to the above, **Ph.D.** is also offered by the various schools of the University.

Classification of Courses Offered by Various Schools					
S. No.	School	Diploma	PG Diploma	UG	PG
1.	MSMSR	0	0	1	1
2.	MSIT	1	1	3	2
3.	MSBS	0	0	1	1
4.	MSFDT	0	0	2	1
5.	MSS	0	0	5	5
6.	MSAH-E	0	0	1	1
7.	MSAH-H	1	0	2	1
8.	MSAH-P	0	1	2	2
9.	MSAH-SW	0	0	0	1
10.	MSLS	0	0	1	1
11.	MSEIT	3	0	5	4
12.	MLS	0	0	2	1
13.	MSED	0	0	1	1
14.	MSPED	0	1	1	1
15.	MSP	1	0	1	0
TOTAL		06	03	28	23

1. MATS University has adopted a continuous and comprehensive evaluation process, which enables the students to learn and become adept even in the most burdensome subject with ease. CBCS is implemented in all courses wherever applicable.
2. MATS University invites visiting faculty to provide special outside classroom training (Outbound Learning), industrial visits and corporate talks.
3. Student's involvement in research projects at UG and PG level which is an essential component of their syllabus. Also, it is extremely encouraging and brings relevance in their conceptual and practical knowledge by bridging the gap between theory and its application.
4. MATS University encourages its faculty to enhance their competence and update their own knowledge by organizing/ participating in conferences/ workshops/ seminars, and undertaking sponsored research and consultancy projects.
5. Visiting Research Professors/Experts provide a platform for a desirable interface of students with visiting scholars and professionals from society, industry, and Government.
6. Revision of curriculum on a regular basis with inputs from feedback from stakeholders and subject experts from academics and industries by Board of Studies.

All courses offered by the University are approved by concerned Regulatory Authorities. Spreading over around 40 acres, the main campus of the University in the rural area of village Gullu has a huge constructed area of 5,42,564 square meters, providing all the requisite amenities for a peaceful Center of Higher Education at the heart of the state that is hardest hit in the country by Naxal terror, catering to the need of students aspiring for quality higher education provided in a quality way.

## ADMISSION PROCEDURE

### Admission Process:

1. Students can register themselves by visiting <https://matsuniversity.ac.in> and clicking on 'Apply Now' for registration.
2. Fill the application form and upload the required documents for eligibility and verification, you shall be issued with a System-generated Unique ID and password which will be required for further communication with the University.
3. After the eligibility verification by the University, an offer letter (Conditional/ Unconditional) shall be issued and sent to your registered email id in case of online admission and if it is an offline admission will be handed over to you.
4. Initial Payment of 10,000 needs to be made at the time of admission confirmation as prescribed in the offer letter by bank transfer/wire transfer/online payment and submits the receipt along with your System ID to the admission department with the copy of the document attested.
5. After the confirmation of the fees received by the University accounts, this is for International students an Acceptance letter (visa letter) and a bonafide letter will be issued which is required to apply for the Student Visa at the nearest Indian Embassy/ High Commission in your home country. Kindly read the important information as mentioned in the acceptance letter for your post-arrival requirements.

### Admission Rules:

1. Applicants in their own interest must read and understand all the information published on the university website [www.matsuniversity.ac.in](http://www.matsuniversity.ac.in) and otherwise published by the University from time to time.
2. The eligibility criterion for all programs for international applicants is a minimum of 50% in the qualifying examination and having studied the pre-requisite subjects for admission into the desired program.

3. For Admission to Ph.D. Programs, the eligibility criterion for international students is Master's degree in the relevant discipline with 55% marks and fulfilment of any other eligibility criteria prescribed by the University from time to time.
4. Issue of offer letter (conditional or unconditional) or any information/guidance/facilitation provided by the University should not be considered as confirmation of admission or access to any facility of the University.
5. The University reserves the right to add, withdraw or change any program or tuition fees at any time, without any notice, the information contained herein or otherwise published or announced by the University, as well as any provision or facility as and if deemed necessary, No responsibility will be accepted by the University for hardship or expenses incurred by the applicant or any person(s) on this account, no matter how they are caused.
6. For the purpose of equivalency of the qualifying exam, the qualifications as recognized by AIU shall be considered. For any qualification not recognized by AIU, equivalency proof has to be provided by the applicant from the Indian High Commission/Consulate in their respective country or other concerned statutory body as applicable.

## EXAMINATION AND EVALUATION

1. MATS University is following CBCS pattern as per the guidelines of UGC since 2015.
2. Our University conducts examinations in a Semester Pattern. July to December is one academic session, and examinations are conducted at the end of the session in the month of December. Further, another academic session starts from January to June, and examinations are conducted in the month of June.
3. Our Examinations Department is well equipped with modern electronic equipments/gazettes like Computers, Photocopiers, Paper Shredder machines, CCTV cameras etc. We are using 20 Computers, 3 Photocopiers and 01 Paper Shredder machine for efficient and timely working of the examination department.

4. We are using a state-of-the-art ERP to process the pre-examination and post-examination work.
5. Students can check their fees, attendance, course module, results, marksheets etc., through ERP. One App of ERP is also provided to students so they can assess required information through App also using their Mobile Phones.
6. In Mats University, we follow the Centre Evaluation System; in simple words, every faculty has to visit the examination section for evaluation of answer sheets. No answer sheets are issued to faculties for evaluation at home. Evaluation is strictly conducted in the Examination Section under the supervision and guidance of the Controller of Examination.
7. Generally, results are declared within 45 days (maximum) after completing of examinations.
8. To facilitate and protect students during the COVID period University conducted online examinations using the ERP system.
9. After the declaration of Results, students are provided mark sheets with the signature of the Controller of Examinations and Registrar. At the end of the respective course, students are provided degree certificate. MATS provides degree certificate with 15 Security features and uses 200 microns non-tearable paper.

## FACILITIES FOR ACADEMIC ACTIVITY

### Infrastructure

S. No.	Campus	Location	Campus area in acres	Built Up area in sq. ft.
1.	Main Campus	Rural	39.50	5,42,564.00
2.	Other Campuses in the country	Urban	02.00	10,728.00

Over the years MATS University, has created sufficient physical infrastructure through proper planning and gradual expansion/up-gradation, with the help of its own funds. MATS University is well equipped with physical infrastructure which includes the following:

- Administrative building, faculty blocks, furnished offices in each Department
- More than 150 classrooms having proper ventilation and electrification and adequate teaching – learning aids.
- Laboratorial work – spaces and air – conditioned laboratories
- Seminar Hall of variable capacity with LCD projection and Sound System facilities
- Modern teaching learning aids in class rooms
- Centralized AC facility
- Well – equipped Library and Laboratories
- MATS Impact Center to host functions
- Meeting Rooms for various purposes
- Separate common rooms for girls and boys
- A Central Library with photocopy facility
- Computers Labs with internet facility
- Central Library with a wide range of books
- CCTV surveillance of the whole campus.
- Ramps at needful points for specially – abled persons
- Provision of lifts
- SMS alert system for students, parents and staff for dissemination of information.
- First aid facility
- Ambulance Facility
- Filtered drinking water facility
- Cafeteria for students and faculties
- A well- maintained Playground
- Separate Examination building
- Uninterrupted power supply
- Separate Hostels for Men (3) & Women (2) in the periphery of the Univ. Campus
- Separate washrooms for students and staff
- Facility of canteen and mess
- Health Centre with basic and emergency day care facilities,
- ATM facility
- Overhead Water Tanks
- Solar Panels for using renewable energy
- Green Campus
- Gymnasium
- Well-equipped indoor and outdoor playgrounds.

S. No.	Plinth Area	Built – Up Area (sq. ft.)
1.	Engineering (MBA/MCA) Block	1,19,335 sq.ft.
2.	Engg. Workshop – 1	15,000 sq.ft.

3.	VC & Registrar Quarter	2,500 sq.ft.
4.	Dispensary	200 sq.ft.
5.	Education Block	23,200 sq.ft.
6.	Law Block	23,200 sq.ft.
7.	I.T. Block	23,200 sq.ft.
8.	Boys Hostel – No.1	21,200 sq.ft.
9.	Distance Education Block	23,200 sq.ft.
10.	Boys Hostel – No. 2	21,200 sq.ft.
11.	Girls Hostel	30,000 sq.ft.
12.	Engg. Workshop – 2	15,000 sq.ft.
13.	Aero. Engg. Workshop + Extension	20,000 sq.ft.
14.	Canteen & Mess	7,200 sq.ft.
15.	**Staff Quarters	9,700 sq.ft.
16.	**Staff Quarters	12,800 sq.ft.
17.	Indoor Sports Complex	7,200 sq.ft.
18.	Auditorium	7,200 sq.ft.
19.	B. P. Ed. Block	23,200 sq.ft.
20.	Sports Ground	8 Acre
21.	Pharmacy Block (B pharma)	23,200 sq.ft.
	<b>TOTAL</b>	<b>5,42,546 sq.ft.</b>

S. No.	Infrastructure – MATS University City Campus, Raipur	Quantity
1.	Class Rooms	69
2.	Staff Room	14
3.	Seminar Hall	02
4.	Labs	17
5.	Meeting/Board Room	02
6.	Rooms Equipped with LCD/Projector	11

S. No.	Infrastructure – MATS University Aarang Campus, Raipur	Quantity
1.	Class Room	80
2.	Tutorial Rooms	09
3.	Staff Room	21
4.	Labs (comp)	06
5.	Conference Room	01
6.	Common Room	12

7.	Library	06
8.	Board Room	02
9.	Admin. Office	07
10.	Seminar Halls (Engg., Law, B. Ed. & B. P. Ed.)	07
11.	Store Room	06
12.	HOD Room	14
13.	Moot Court	02
14.	Engg. Labs & Workshops.	54
15.	IT Labs	02
16.	Server Room	01
17.	Boys Hostel	02
18.	Girls Hostel	01
19.	Medical Center	01
20.	Chancellor's Room	01
21.	Vice Chancellor's Room	01
22.	Registrar Office	01
23.	Staff Quarter	06
24.	ATM	01
25.	Security Guard	01
26.	Guest House	01
27.	Vice Chancellor Quarter	01
28.	Registrar Quarter	01
29.	Indoor Hall (TT/Badminton/ Carom/ Chess)	01
30.	Gym	01
31.	Mess	01
32.	Canteen	01
33.	Playground	08
34.	Basket Ball Court	01
35.	Volley Ball Court	01
36.	Hand Ball Court	01
37.	Bank Building	01



38.	Guest House	01
39.	Administration Office	10
40.	Accounts Office	01
41.	Examination Department	01
42.	NCC Office	01

## HOSTELS & MESS

Hostel Rooms & their Occupancy Status				
S. No.	Hostel	Location	Capacity	Occupancy
1.	Boys Hostel 1	University Campus	99	45
2.	Boys Hostel 2	University Campus	180	20
3.	Girls Hostel	University Campus	210	45
4.	Boys Hostel 1	Raipur Campus	28	00
5.	Boys Hostel 2	Raipur Campus	24	14
6.	Girls Hostel	Raipur Campus	100	45
	TOTAL		641	169

## ACADEMIC SCHOOLS/DEPARTMENTS


1. MATS School of Management Studies & Research (MSMSR)
2. MATS School of Information Technology (MSIT)
3. MATS School of Business Studies (MSBS)
4. MATS School of Fashion Designing & Technology (MSFDT)
5. MATS School of Sciences (MSS)
6. MATS School of Arts and Humanities – English (MSAH-E)
7. MATS School of Arts and Humanities – Hindi (MSAH-H)
8. MATS School of Arts and Humanities – Psychology (MSAH-P)
9. MATS School of Arts and Humanities – Social Work (MSAH-SW)
10. MATS School of Library Science (MSLS)
11. MATS School of Engineering & IT (MSEIT)
12. MATS Law School (MLS)
13. MATS School of Education (MSED)
14. MATS School of Physical Education (MSPED)
15. MATS School of Pharmacy (MSP)

## MATS University Campus, Aarang



## Smart Network Futuristic Campus

Seminar Hall	4		
Sports facilities			
Playgrounds	Cricket	1	
	Football	1	
	Hand Ball	2	
	Volley Ball	2	
	Basket Ball	2	
	Hockey	1	
	Kabaddi	2	
	Kho - Kho	2	
	Athletic Track	1	
	Long Jump	1	
	Badminton	2	
	Lawn Tennis	2	
	Table Tennis	2	
	Total	21	
Gymnasium	1		
Indoor Sports Complex	1		
Power House	Generator Set		
Hostel			
Boys Hostel		Girls Hostel	
Number of Hostels	2	Number of Hostels	1
Number of Inmates	97	Number of Inmates	12
Facilities	Residence		
	Guest House		
	Mess & Canteen		
	Doctor		
	Ambulance		
	Sports		
	Library		
	Bank & ATM		
	Power Back up		
	AC Transport Facility for Students & Staff		
	Waste Management Facility		

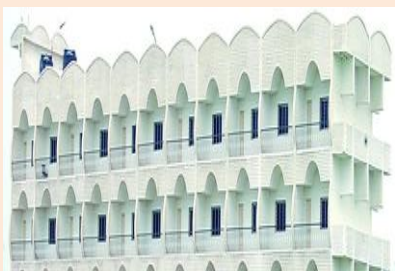

	24 Hrs. Water Supply
	Solar Power
	Cafeteria
	Well-developed Garden
	24 Hrs. Potable Water Facility
	Room Coolers
	Washing Machines
	Security Guards
	Color Television with Satellite Dish TV
	Regular Cleaning by HouseKeeping
	Solar Water Heater
	CCTV Camera
<b>Girls Hostel</b>	
Working Women's Hostel	3 Residences
Residential facilities for faculty and non-teaching staff	Yes
Cafeteria	Yes
<b>Health Centre – Nature of facilities available</b>	
Inpatient	No
Outpatient	Yes
Ambulance	Yes
Emergency Care Facility	Yes
Banking	Yes
Transport Facility for Students and Staff	Yes
Facilities for persons with disabilities	Yes
Green House	Yes
Power House	Yes
Waste Management Facility	Yes

### MATS University City Campus, Raipur



### Vibrant Campus in the heart of the city

Seminar Hall	2
<b>Sports facilities</b>	
Indoor Play Facilities	Yes

Gymnasium		1	
Hostel			
Boys Hostel		Girls Hostel	
Number of Hostels	2	Number of Hostels	1
Number of Inmates	47	Number of Inmates	60
<div>Facilities</div> 	Residence		
	Mess & Canteen		
	Doctor on Call		
	Ambulance		
	Sports		
	Library		
	ATM		
	Power Back up		
	Solar Power		
	Air Cooler		
	Security		
	Washing Machines		
	24 Hours Potable Water		
	Regular Cleaning by House Keeping		
Color Television with Satellite Dish TV			
Solar Water Heater			
Residential facilities for faculty and non – teaching staff	Yes		
Cafeteria	Yes		
Health Centre – Nature of facilities available			
Outpatient	Yes		
Ambulance	Yes		
Emergency Care Facility	Yes		
Banking	Yes		
Transport Facility for Students and Staff	Not required		
Facilities for persons with disabilities	Yes (ramp at the entrance)		
Power House	Yes		
Waste Management Facility	Yes		
Psychotherapy and Counseling centre – Nature of facilities available			
		<ul style="list-style-type: none"><li>• OPD</li><li>• Psychology Laboratory</li><li>• Individual Counseling</li><li>• Group Therapy</li><li>• Supportive Environment</li><li>• Confidentiality</li><li>• Preventive and Outreach Programs</li></ul>	

## INFRASTRUCTURE & ACADEMIC EXPANSION PLAN

At MATS University, we are committed to continuously enhancing our campus facilities and academic offerings to provide the best possible environment for learning and development. As part of our strategic plan for the academic year 2023-24, we are excited to announce several key infrastructure and academic expansions that will significantly benefit our students, faculty, and the broader community.

### 1. Construction of a 1000-Seater Multipurpose Auditorium

In response to the growing need for a versatile space to host large-scale events, MATS University will be constructing a state-of-the-art, 1000-seater multipurpose auditorium. This facility will serve as a hub for academic conferences, cultural events, seminars, workshops, and student activities. The auditorium will be equipped with modern audiovisual technology, making it a premier venue for a wide range of events that foster academic and extracurricular engagement.

### 2. Upgrading Classroom Infrastructure

To ensure that our students have access to the best learning environments, we will be upgrading classroom infrastructure across the university. This includes modernizing classrooms with comfortable seating, enhanced lighting, and improved acoustics. We will also be incorporating more flexible seating arrangements to facilitate interactive and collaborative learning experiences. The aim is to create spaces that are not only conducive to learning but also adaptable to various teaching methodologies.

### 3. Development of ICT-Based Infrastructure

Recognizing the importance of technology in education, MATS University is investing in the development of more ICT (Information and Communication Technology) based infrastructure. This includes the installation of smart classrooms, enhanced Wi-Fi connectivity, and digital learning platforms that support e-learning and blended learning models. These technological advancements will enable students and faculty to engage with digital resources seamlessly and enhance the overall learning experience.

### 4. Upgrading All Laboratories

In line with our commitment to providing cutting-edge facilities for practical learning, all laboratories across the university will be upgraded. This includes the installation of the latest equipment and tools, ensuring that our science, engineering, and technical programs are supported by state-of-the-art labs. These upgrades will enhance the hands-on learning experiences for students, enabling them to gain practical skills that are essential for their academic and professional success.

### 5. Introduction of New Academic Programs

To meet the evolving needs of the education and healthcare sectors, MATS University will be introducing new academic programs, including:

- **Bachelor of Science in Nursing:** This program is designed to prepare students for a career in healthcare, with a strong emphasis on clinical skills, patient care, and ethical practices. The nursing program will include both theoretical coursework and practical training in healthcare settings.
- **Five-Year Integrated B.Ed. Program:** This innovative program will offer students a comprehensive pathway to becoming skilled educators, combining undergraduate studies with professional teacher training. The integrated B.Ed. program will equip students with the knowledge and pedagogical skills necessary to excel in the field of education.

### Conclusion

These infrastructure and academic expansions are part of MATS University's ongoing commitment to excellence in education and student development. By investing in modern facilities, technological advancements, and new academic programs, we are ensuring that our students have access to the best resources and opportunities. We believe that these initiatives will not only enhance the quality of education at MATS University but also contribute to the overall growth and success of our students.

We look forward to seeing the positive impact of these developments on our university community in the coming years.





# ANNUAL REPORT 2023 - 24

---

## CHAPTER – 4

Course-wise admissions AY 2023-24

School-wise admissions AY 2023-24

Notable Achievements of the Faculties

- Research Papers
- Books/Book Chapters
- Patents
- Workshops/Seminars/Conferences
- FDPs

Notable Achievements of the Students

- NCC
- Other Activities
- Placement Statistics

Community engagement & social responsibilities

Important activities

Impact and future plans

Testimonials of the students

---

## CHAPTER – 4

### ADMISSIONS IN THE YEAR 2023 – 24

A. Break up of Student Strength (Course Category – Reservation – Gender)										
S. No.	Course Category	General		OBC		SC		ST		Total
		Male	Female	Male	Female	Male	Female	Male	Female	
1	Diploma	34	14	53	14	19	1	4	3	142
2	PG	12	33	55	15	10	6	7	1	139
3	UG	360	226	304	156	105	59	59	42	1311
4	PG Diploma	151	159	106	189	29	41	21	26	722
Total		557	432	518	374	163	107	91	72	2314
		989		892		270		163		

B. Break up of Student Strength (School/Department Wise – Reservation – Gender)										
S. No	School	General		OBC		SC		ST		Total
		Male	Female	Male	Female	Male	Female	Male	Female	
1	MSMSR	139	38	42	22	9	3	5	8	266
2	MSIT	46	59	93	39	29	7	7	1	281
3	MSBS	93	49	53	31	12	7	8	5	258
4	MSFDT	5	18	2	4	1	3	0	0	33
5	MSS	24	62	51	120	12	20	15	15	319
6	MSAH-E	10	17	10	9	1	3	1	2	53
7	MSAH-H	37	22	55	17	30	13	17	3	194
8	MSAH-P	22	50	8	15	8	6	1	1	111
9	MSAH -SW	1	2	3	3	0	0	0	0	9
10	MSLS	6	11	10	17	6	10	2	4	66
11	MSEIT	42	6	55	10	11	4	5	1	134
12	MLS	77	51	24	24	15	12	6	9	218
13	MSED	7	22	16	27	6	8	3	13	102
14	MSPED	23	12	64	24	14	5	21	5	168
15	MSP	25	13	32	12	9	6	2	3	102
Total		557	432	518	374	163	107	93	70	2314
		989		892		270		163		



## NOTABLE ACHIEVEMENTS OF THE FACULTIES

### A. PUBLICATIONS

S. No.	Name of Faculty	School/ Department	Research Papers	Books	Book Chapters	Patents
1.	Prof. (Dr.) Umesh Gupta	MSBS	6	1	0	0
2.	Mr. Deeptanshu Sharma	MSBS	1	0	1	0
3.	Dr. Madhu Vijayan Memon	MSMSR	1	0	2	0
4.	Dr. Pravin Chandra Singh	MSMSR	2	0	4	0
5.	Dr. Premendra Sahu	MSMSR	2	1	1	0
6.	Dr. Jhuma Saha	MSMSR	13	0	3	0
7.	Dr. Abhilasha Shukla	MSMSR	8	0	1	1
8.	Prof. (Dr.) Omprakash Chandrakar	MSIT	3	0	0	0
9.	Prof. (Dr.) Bhavna Narain	MSIT	8	6	5	2
10.	Dr. Sunita Kushwaha	MSIT	4	0	0	0
11.	Ms. Hemlata Patel	MSIT	0	0	1	0
12.	Mr. Amit Sahu	MSIT	0	0	1	0
13.	Mr. Digvijay Singh	MSIT	0	0	1	0
14.	Prof. (Dr.) Ashish Saraf	MSS	2	0	4	0
15.	Prof. (Dr.) Sandhyarani Panda	MSS	1	0	1	0
16.	Prof. (Dr.) Snehlata Das	MSS	0	0	1	0
17.	Prof. (Dr.) Prashant Mundeja	MSS	4	2	3	7
18.	Dr. Radha Krishnan	MSS	1	0	2	0
19.	Dr. Jitendra Kumar	MSS	0	1	0	0
20.	Dr. Manoj Kumar Banjare	MSS	8	2	8	2
21.	Dr. Bindushree Baghel	MSS	2	1	1	0
22.	Dr. Sounak Sarkar	MSS	0	0	0	0
23.	Dr. Preetika Chatterjee	MSS-FS	0	0	1	0
24.	Prof. (Dr.) Ranjana Das Sarkhel	MSAH-E	7	0	0	0
25.	Dr. Neeta Lalwani	MSAH-E	0	0	0	0
26.	Dr. Sarika Sinha	MSAH-E	4	0	1	0
27.	Dr. Sajal Thakur	MSAH-E	5	0	0	0
28.	Ms. Darshika Choudhary	MSAH-E	4	0	1	0

29.	Ms. Simran Minj	MSAH-E	0	0	0	0
30.	Ms. Rukhsar Parveen	MSAH-E	1	0	0	0
31.	Prof. (Dr.) Shaista Ansari	MSAH-P	0	1	2	0
32.	Dr. Anshu Srivastava	MSAH-P	0	0	2	0
33.	Dr. Zainab Fatima	MSAH-P	0	0	2	0
34.	Dr. Deenanath Yadav	MSAH-SW	5	2	4	0
35.	Dr. Chhavinath Yadav	MSAH-SW	2	2	4	0
36.	Prof. (Dr.) Reshma Ansari	MSAH-H	9	2	0	0
37.	Dr. Kamlesh Gogia	MSAH-H	2	1	1	0
38.	Dr. Ramni Chandrakar	MSAH-H	4	0	1	0
39.	Dr. Sunita Tiwari	MSAH-H	2	0	0	0
40.	Dr. Suparna Srivastava	MSAH-H	1	0	0	0
41.	Dr. Kalpana Chandrakar	MSLS	3	1	1	1
42.	Dr. Bhuleshwari Sahu	MSLS	3	1	3	1
43.	Mr. Lakesh Kumar	MSLS	3	0	3	0
44.	Mr. Sanjay Sahajit	MSLS	5	0	7	0
45.	Mr. Kuleshwar Prasad Dewangan	MSLS	0	0	0	0
46.	Dr. Prasanta Kumar Panda	MLS	0	0	0	0
47.	Dr. Shivakant Prajapati	MLS	5	0	1	0
48.	Dr. Rahul Singh	MLS	1	0	1	0
49.	Dr. Prashant Kumar	MLS	5	0	4	0
50.	Mr. Adarsh Kumar Mishra	MLS	4	0	0	0
51.	Prof. (Dr.) Parvinder Hanspal	MSED	4	0	0	0
52.	Prof. (Dr.) Sanjeet Tiwari	MSED	8	0	0	0
53.	Prof. (Dr.) Sangeeta Shroff	MSED	4	2	6	1
54.	Prof. (Dr.) Pragya Jha	MSED	7	0	6	0
55.	Mr. Chanki Raj Verma	MSED	0	1	6	1
56.	Dr. Ayaz Ahmad Khan	MSPED	3	0	0	0
57.	Dr. Sunil Kumar Mishra	MSPED	3	1	1	2
58.	Dr. Shrada Purwar	MSPED	1	0	0	0
59.	Dr. Mithilesh Kumar Singh	MSPED	3	0	0	0
60.	Dr. Yogesh Kumar Sahu	MSPED	0	0	0	0
61.	Mr. Raghav Kumar	MSPED	2	0	0	0

62.	Prof. (Dr.) Amit Kumar Nayak	MSP	1	1	0	0
63.	Mr. Deependra Soni	MSP	3	1	3	2
64.	Mr. Mahendra Kumar Sahu	MSP	9	0	0	0
65.	Ms. Varsha Rawat	MSP	3	0	2	1
66.	Prof. (Dr.) Aneesh Somwanshi	MSEIT	7	0	2	1
67.	Dr Abhishek Kumar Jain	MSEIT	6	2	0	2
68.	Dr. Shailendra Ku. Bohidar	MSEIT	7	2	1	9
69.	Dr. N K Dhapekar	MSEIT	7	2	2	1
70.	Dr. Rakesh Pandey	MSEIT	5	1	0	2
71.	Dr. Shree Ram Malani	MSEIT	5	1	0	1
72.	Dr. Akash Deep Kushwaha	MSEIT	3	1	0	0
73.	Ms. Payal	MSEIT	0	0	0	0
74.	Mr. Rakshit Sisodiya	MSEIT	1	0	0	0
Total			233	39	108	37

## B. PARTICIPATIONS & ORGANISES

S. No.	Name of Faculty	School/ Department	Participati on in Workshop/ Seminar/C onferences	Organised/ Chaired Workshop/ Seminar/C onferences	Attended FDP/PD P/MDPs	Organised FDP/PDP /MDPs
1.	Prof. (Dr.) Umesh Gupta	MSBS	1	2	0	0
2.	Mr. Deeptanshu Sharma	MSBS	5	2	4	1
3.	Dr. Madhu Vijayan Memon	MSMSR	1	0	3	0
4.	Dr. Pravin Chandra Singh	MSMSR	0	0	1	0
5.	Dr. Premendra Sahu	MSMSR	4	1	2	1
6.	Dr. Jhuma Saha	MSMSR	1	1	2	1
7.	Dr. Abhilasha Shukla	MSMSR	0	1	1	1
8.	Prof. (Dr.) Omprakash Chandrakar	MSIT	2	2	1	0
9.	Prof. (Dr.) Bhavna Narain	MSIT	4	1	1	0
10.	Dr. Sunita Kushwaha	MSIT	2	0	1	0
11.	Ms. Hemlata Patel	MSIT	2	0	2	0
12.	Mr. Amit Sahu	MSIT	2	0	2	0

13.	Mr. Digvijay Singh	MSIT	0	0	1	0
14.	Prof. (Dr.) Ashish Saraf	MSS	1	2	0	0
15.	Prof. (Dr.) Sandhyarani Panda	MSS	1	0	0	0
16.	Prof. (Dr.) Snehlata Das	MSS	0	0	0	0
17.	Prof. (Dr.) Prashant Mundeja	MSS	2	1	1	0
18.	Dr. Radha Krishnan	MSS	3	1	3	0
19.	Dr. Jitendra Kumar	MSS	2	0	1	0
20.	Dr. Manoj Kumar Banjare	MSS	0	0	0	0
21.	Dr. Bindushree Baghel	MSS	2	1	0	0
22.	Dr. Sounak Sarkar	MSS	2	0	0	0
23.	Dr. Preetika Chatterjee	MSS-FS	1	0	2	0
24.	Prof. (Dr.) Ranjana Das Sarkhel	MSAH-E	3	3	2	1
25.	Dr. Neeta Lalwani	MSAH-E	3	3	1	1
26.	Dr. Sarika Sinha	MSAH-E	3	3	1	1
27.	Dr. Sajal Thakur	MSAH-E	6	2	2	1
28.	Ms. Darshika Choudhary	MSAH-E	4	3	1	1
29.	Ms. Simran Minj	MSAH-E	0	0	0	0
30.	Ms. Rukhsar Parveen	MSAH-E	6	2	5	1
31.	Prof. (Dr.) Shaista Ansari	MSAH-P	0	1	1	0
32.	Dr. Anshu Srivastava	MSAH-P	0	1	0	0
33.	Dr. Zainab Fatima	MSAH-P	0	1	1	0
34.	Dr. Deenanath Yadav	MSAH-SW	2	2	0	0
35.	Dr. Chhavinath Yadav	MSAH-SW	0	0	0	0
36.	Prof. (Dr.) Reshma Ansari	MSAH-H	5	1	1	0
37.	Dr. Kamlesh Gogia	MSAH-H	3	0	0	0
38.	Dr. Ramni Chandrakar	MSAH-H	4	0	0	0
39.	Dr. Sunita Tiwari	MSAH-H	4	0	0	0
40.	Dr. Suparna Srivastava	MSAH-H	0	0	0	0
41.	Dr. Kalpana Chandrakar	MSLS	8	1	4	0
42.	Dr. Bhuleshwari Sahu	MSLS	5	1	1	0
43.	Mr. Lakesh Kumar	MSLS	2	1	1	0
44.	Mr. Sanjay Sahajit	MSLS	4	1	4	0

45.	Mr. Kuleshwar Prasad Dewangan	MSLS	0	0	0	0
46.	Dr. Prasanta Kumar Panda	MLS	2	0	3	0
47.	Dr. Shivakant Prajapati	MLS	2	0	3	0
48.	Dr. Rahul Singh	MLS	1	1	1	0
49.	Dr. Prashant Kumar	MLS	1	5	1	0
50.	Mr. Adarsh Kumar Mishra	MLS	4	0	4	0
51.	Prof. (Dr.) Parvinder Hanspal	MSED	0	0	0	0
52.	Prof. (Dr.) Sanjeet Tiwari	MSED	3	0	1	0
53.	Prof. (Dr.) Sangeeta Shroff	MSED	2	0	1	0
54.	Prof. (Dr.) Pragya Jha	MSED	4	0	5	0
55.	Mr. Chanki Raj Verma	MSED	9	0	2	0
56.	Dr. Ayaz Ahmad Khan	MSPED	0	0	0	0
57.	Dr. Sunil Kumar Mishra	MSPED	2	0	0	0
58.	Dr. Shrada Purwar	MSPED	3	0	1	0
59.	Dr. Mithilesh Kumar Singh	MSPED	3	0	1	0
60.	Dr. Yogesh Kumar Sahu	MSPED	0	0	1	0
61.	Mr. Raghav Kumar	MSPED	1	0	0	0
62.	Prof. (Dr.) Amit Kumar Nayak	MSP	1	0	0	0
63.	Mr. Deependra Soni	MSP	2	0	0	0
64.	Mr. Mahendra Kumar Sahu	MSP	2	0	1	0
65.	Ms. Varsha Rawat	MSP	2	0	2	0
66.	Prof. (Dr.) Aneesh Somwanshi	MSEIT	2	2	1	0
67.	Dr. Abhishek Kumar Jain	MSEIT	1	1	0	0
68.	Dr. Shailendra Ku. Bohidar	MSEIT	2	1	2	0
69.	Dr. N K Dhapekar	MSEIT	4	1	1	1
70.	Dr. Rakesh Kumar Pandey	MSEIT	2	0	1	0
71.	Dr. Shree Ram Malani	MSEIT	1	1	0	0
72.	Dr. Akash Deep Kushwaha	MSEIT	2	1	1	0
73.	Ms. Payal	MSEIT	0	0	1	0
74.	Mr. Rakshit Sisodiya	MSEIT	1	1	1	0
Total			159	55	88	11

## NOTABLE ACHIEVEMENTS OF THE STUDENTS

### A. NCC

S. No	AY 2023-24	No. of Students		
		Males	Females	Total
1.	1 <sup>st</sup> Year	15	9	24
2.	2 <sup>nd</sup> Year	9	5	14
3.	3 <sup>rd</sup> Year	7	8	15

### B. OTHER ACTIVITIES

S. No	Particulars	Number
1.	Workshops	21
2.	National Seminars/Conferences	17
3.	International Seminar	1
4.	Team Building Activities	209
5.	Industrial Visits	23
6.	Webinars	1

### C. PLACEMENT STATISTICS

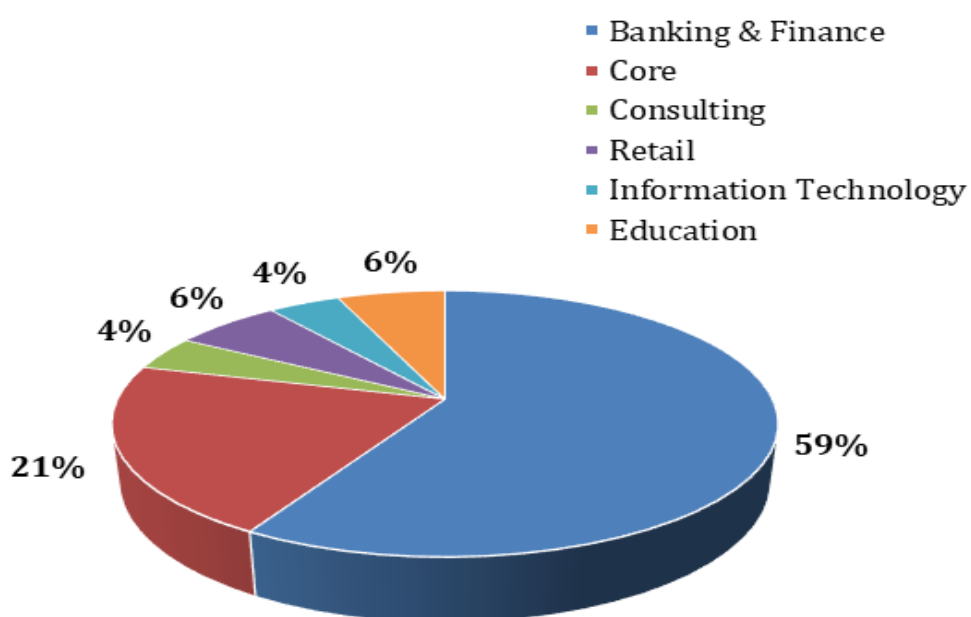


Fig. 5.1 Placement Statistics across various Sectors

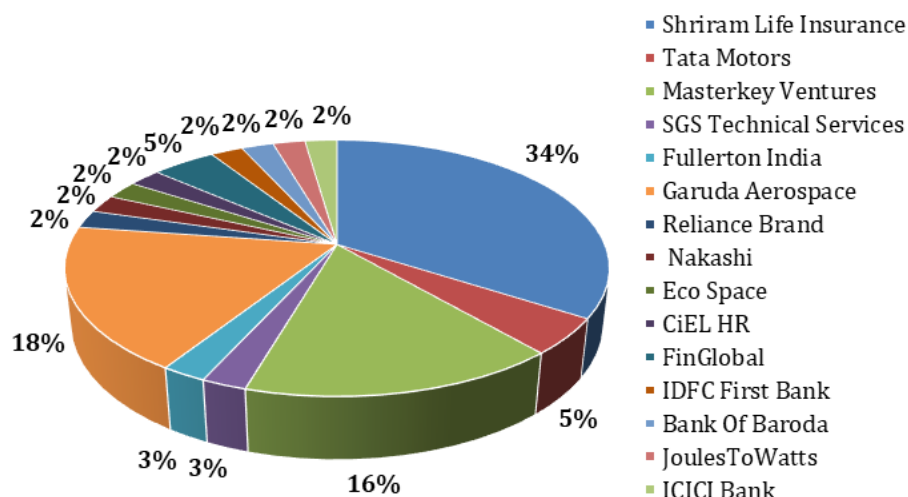


Fig. 5.2 Placement Statistics across Organizations

#### D. PLACEMENT PACKAGES

S. No.	Particulars	Package
1.	Highest	12.00 LPA
2.	Lowest	4.80 LPA
3.	Average	6.00 LPA
4.	Median	7.10 LPA

### COMMUNITY ENGAGEMENT AND SOCIAL RESPONSIBILITIES

#### Empowering Five Villages: A Commitment to Community Development

MATS University has always believed in giving back to society and fostering sustainable development in the communities around its campus. During the academic year 2023-24, the university extended its outreach program to five villages in and around the university campus. These initiatives were designed to address critical issues such as healthcare, legal assistance, education, environmental sustainability, and modern agricultural practices. Here's an overview of the key initiatives undertaken:

##### 1. Free Healthcare Initiatives

Recognizing the importance of healthcare access, MATS University organized multiple free health camps in the five villages. These camps provided medical check-ups, essential medicines,

and consultations with doctors. Special attention was given to maternal and child health, as well as chronic conditions like diabetes and hypertension. Health awareness sessions were also conducted to educate villagers on preventive healthcare, hygiene, and nutrition.

## **2. Free Legal Aid Camps**

Understanding the legal challenges faced by rural communities, MATS University's legal department organized free legal aid camps in collaboration with local legal professionals. These camps provided villagers with legal advice and assistance on a range of issues, including land disputes, inheritance rights, and other civil matters. The goal was to empower the villagers with knowledge of their legal rights and provide them with the necessary support to address their legal concerns.

## **3. Educating Village Women on Personal Care and Sanitation**

Personal care and sanitation are vital aspects of health and well-being, especially in rural areas. MATS University organized workshops specifically for women in these villages to educate them on the importance of personal hygiene, menstrual health, and sanitation practices. These sessions were designed to break down stigmas and encourage open conversations about women's health. The university also distributed hygiene kits to the participants as part of the initiative.

## **4. Plantation of Trees: Greening the Villages**

Environmental sustainability is a core value at MATS University. As part of its green initiative, the university launched a tree plantation drive in the five villages. Students, faculty, and villagers came together to plant trees, aiming to increase green cover and promote environmental awareness. The initiative also included educating villagers on the importance of tree conservation and the benefits of a greener environment for future generations.

## **5. Educating Farmers on Drone Technology for Farming**

MATS University recognizes the importance of modernizing agriculture to increase productivity and sustainability. The university organized workshops for local farmers to educate them on the use of drone technology in farming. These sessions covered topics such as crop monitoring, precision agriculture, and efficient use of resources through technology. The



initiative aimed to equip farmers with knowledge and tools that could help them enhance their farming practices and increase yield.

## IMPORTANT ACTIVITIES

1. Total 1516 number of students awarded Degrees in Regular mode in last academic year.
2. Total 69 number of Research Scholars awarded Ph. D. in the last academic year, overall 337 PhD degree awarded till June-2024.
3. Organized programs for Teaching and Non-Teaching Staff for making them more skillful in the responsibilities that are handed over to them.
4. The University entered an MoU with Board of Apprenticeship Trainee (Western Region, Mumbai) to improve the employability of students pursuing Undergraduate level general degree programme.
5. The University entered an MOU with Skyline University College (SUC) Sharjah.
6. The University entered an MOU with East Carolina University, USA.
7. The University entered an MOU with INTI International University, Malaysia, to further the cause of imparting quality higher education in the best possible way.
8. The University entered an MOU with the International Aviation Games Board India.
9. The University entered an MOU with BOSCH India Foundation, CSR & Skill Development.
10. A Letter of Understanding has been done with Training Point, Navi Mumbai for sharing of knowledge resources and jointly work on building capacities of students/learners through the IBM Skills Platform.
11. The University entered an MOU with the Logistics Sector Skill Council (LSC)- established by the Ministry of Skill Development and Entrepreneurship (MSDE).
12. The University has also entered into MoUs with 03 (three) organizations, namely, CIEL HR, Rama Motors (TATA Motors), and Vedanta Medica, which would enable placement of students and exposure to the industry standards.
13. The University has also entered into MoUs with 04 (four) universities: Motherhood University Roorkee, Uttarakhand, Chanakya National University of Law, Patna, Patna Law College, and Patna University.

14. The University entered an MOU with the Institution Innovation Council, Ministry of Education, Govt of India.
15. The University entered an MOU with Chhattisgarh State Minor Forest Produce (Trading & Development) Co-operative Federation Limited.
16. The University entered an MOU with the Institute of Company Secretaries of India (ICSI).
17. The University is in the process of upgradation the NAAC B++ grade to the next upgraded level; the SSR has been already submitted on 11th May 2024 for the 2nd Cycle accreditation; and is again applying for NIRF ranking. Further, the 12B inspection is pending and work towards the same has already commenced since the beginning of 2023.
18. The University also offers scholarships in the form of Chancellor's Scholarship. The following data shows the amount of scholarships with the number of benefitted students in the last Six (06) years.

S. No.	Year	No. of Students	Amount of Scholarship
1.	2018 - 19	405	Rs. 43,54,940.00
2.	2019 - 20	615	Rs. 76,90,815.00
3.	2020 - 21	944	Rs. 1,30,97,710.00
4.	2021 - 22	1175	Rs. 1,32,21,785.00
5.	2022 - 23	1047	Rs. 1,02,28,530.00
6.	2023-24	971	Rs. 1,19,10,725.00

### Impact and Future Plans

These outreach initiatives have had a profound impact on the communities in and around MATS University. By addressing critical issues in healthcare, legal rights, education, environmental sustainability, and agriculture, the university has helped uplift the lives of many villagers. The programs have not only provided immediate benefits but have also empowered these communities with knowledge and resources for long-term development.

Looking ahead, MATS University is committed to expanding these initiatives and exploring new ways to serve the surrounding communities. The university plans to continue its outreach efforts, ensuring that its students, faculty, and resources contribute to the well-being and progress of society.

## TESTIMONIALS OF THE STUDENTS

### Testimonials of a ~~Psychology~~ Student

*“My journey at MATS University has been nothing short of transformative. As a Management student, I was not only equipped with the theoretical knowledge needed to excel in the business world but also given ample opportunities to apply that knowledge in real-world scenarios. The curriculum at MATS University is dynamic and industry-focused, which helped me stay ahead of the curve and prepared me for the challenges of a rapidly changing business environment.*

*What truly sets MATS University apart is the holistic approach to education. The faculty members are not just teachers, but mentors who guide you every step of the way. Their real-world experience and insights added immense value to my learning. Additionally, the university’s emphasis on leadership, ethics, and community engagement helped shape me into a well-rounded professional.*

*I had the privilege of participating in various internships, projects, and industry interactions, all of which were facilitated by the university’s strong network of industry partners. These experiences were invaluable in bridging the gap between academic learning and practical application.*

*The vibrant campus life, with its diverse cultural and extracurricular activities, also played a significant role in my personal growth. I developed lifelong friendships, expanded my horizons, and learned to appreciate the importance of balancing work with play.*

*As I step into the next phase of my career, I feel confident and prepared, thanks to the comprehensive education I received at MATS University. I will always be grateful for the experiences, knowledge, and connections that I gained during my time here. MATS University will always hold a special place in my heart.”*

[Student’s Name]

~~B.Sc.~~ Graduate, Class of 2024

MATS University

### Testimonial of a BSc Student

*“Studying at MATS University has been an enriching and empowering experience. As a B.Sc. student, I was able to dive deep into my chosen field of study, thanks to the university’s strong emphasis on both theoretical understanding and practical application. The well-structured curriculum, combined with hands-on lab sessions and research opportunities, truly allowed me to explore and develop my scientific skills.*

*What makes MATS University exceptional is its supportive and encouraging academic environment. The faculty here are not just knowledgeable, but they are also deeply invested in our growth as students. They have always been approachable, offering guidance and mentorship beyond the classroom. This has played a crucial role in nurturing my passion for science and inspiring me to push the boundaries of my knowledge.*

*The university also provides a range of extracurricular activities that helped me build a balanced and fulfilling college life. From participating in science clubs and seminars to engaging in cultural events and sports, I found numerous opportunities to develop my skills and make lifelong friends.*

*One of the highlights of my time at MATS University was the exposure to real-world challenges through internships and industry interactions. These experiences helped me gain practical insights and better understand the applications of my studies in the professional world. I feel that this holistic approach has prepared me well for both higher studies and a career in science.*

*I am deeply grateful to MATS University for providing me with a solid foundation and a well-rounded education. The knowledge, skills, and experiences I have gained here will undoubtedly shape my future. I look forward to staying connected with this incredible institution and giving back to the community that has given me so much.”*

- [Student’s Name]

B.Sc. Graduate, Class of 2024

MATS University

### Testimonials of a Psychology Student

*“My experience as a Psychology student at MATS University has been truly transformative. From the very first day, I was immersed in a learning environment that encouraged curiosity, critical thinking, and compassion—qualities that are essential for anyone pursuing a career in psychology. The curriculum was comprehensive, covering both classical theories and contemporary practices, which gave me a strong foundation and a deep understanding of the field.*

*One of the most impactful aspects of my time at MATS University was the faculty. They are not only experts in their respective fields but also mentors who genuinely care about our growth, both academically and personally. Their support and guidance have been invaluable, especially during challenging times. They always encouraged us to think critically, engage in discussions, and apply our knowledge to real-world situations.*

*The practical experiences I gained through internships, workshops, and hands-on training sessions were crucial in shaping my understanding of psychology. MATS University provided me with opportunities to work in real clinical and counseling settings, which allowed me to apply the theories I learned in class to help others. These experiences have not only prepared me for my future career but also deepened my passion for the field.*

*Outside the classroom, MATS University offers a vibrant campus life that helped me grow as an individual. I was able to participate in various student clubs, events, and community service projects, all of which contributed to my personal and professional development. The sense of community here is strong, and I am grateful for the friendships and connections I’ve made along the way.*

*As I prepare to graduate, I feel confident and equipped to pursue my goals, whether in further studies or in the professional world. MATS University has provided me with more than just an education—it has given me a sense of purpose and direction. I will always cherish the memories and experiences I’ve had here, and I am proud to be a part of the MATS family.”*

- [Student’s Name]

Psychology Undergraduate, Class of 2024

MATS University

## Location Map

